

## Table of Contents

Institutions of the Fenway Alliance.....	3
Community Partnership Youth Programs	11
Berklee College of Music.....	12
Boston Arts Academy.....	12
Boston Conservatory.....	13
Boston Symphony Orchestra.....	13
Emmanuel College.....	13
Forsyth Institute.....	13
Harvard School of Public Health.....	14
Huntington Theatre Company.....	15
Isabella Stewart Gardner Museum.....	15
Mary Baker Eddy Library for the Betterment of Humanity.....	16
Massachusetts College of Art .....	16
Massachusetts College of Pharmacy & Health Sciences.....	17
Museum of Fine Arts, Boston.....	17
National Braille Press.....	18
New England Conservatory .....	18
Northeastern University.....	19
School of the Museum of Fine Arts, Boston.....	20
Simmons College.....	20
The First Church of Christ, Scientist.....	21
Wheelock College & Wheelock Family Theatre.....	21
Wentworth Institute of Technology.....	22
YMCA of Greater Boston.....	23
Community Partnership Elder Programs	24
Berklee College of Music.....	25
Boston Conservatory.....	25
Boston Symphony Orchestra.....	25
Harvard School of Public Health.....	25

Huntington Theatre Company.....	25
Isabella Stewart Gardner Museum.....	25
Museum of Fine Arts, Boston.....	25
New England Conservatory .....	25
Northeastern University.....	25
Simmons College.....	26
Wentworth Institute of Technology.....	26
YMCA of Greater Boston.....	26
Disabilities Access & General Community Programs	27
Berklee College of Music.....	28
Boston Conservatory.....	28
Boston Symphony Orchestra.....	28
Emmanuel College.....	28
First Church of Christ, Scientist.....	29
Forsyth Institute.....	29
Harvard School of Public Health.....	29
Huntington Theatre Company.....	29
Isabella Stewart Gardner Museum.....	29
Massachusetts College of Art .....	30
Massachusetts College of Pharmacy & Health Sciences.....	30
Museum of Fine Arts, Boston.....	30
National Braille Press.....	31
New England Conservatory .....	31
Northeastern University.....	32
School of the Museum of Fine Arts, Boston.....	33
Simmons College.....	33
Wheelock College & Wheelock Family Theatre.....	33
Wentworth Institute of Technology.....	33
YMCA of Greater Boston.....	34
Disabilities Access Checklist by Institution.....	36

## Institutions of the Fenway Alliance

### Berklee college of music

Founded in 1945, Berklee College of Music is the world's largest independent music college and the premier institution for the study of contemporary music. The college's 3,800 students and 460 faculty members interact in an environment designed to provide the most complete learning experience possible, including all of the opportunities and challenges presented by a career in the contemporary music industry. Among these challenges is the need to develop an appreciation and understanding of the value of musical service to our community and culture. The President's Office of Community and Government Affairs was established 15 years ago to buttress the community service aspect of the college's mission which is to educate, train, and develop students to excel in music as a career as well as provide meaningful community programs for student participation.



The Boston Arts Academy is committed to a rigorous academic and arts education for students who are eager to think creatively and independently, to question, and to take risks within a college preparatory program. As a pilot school within the Boston Public Schools, the Arts Academy is charged with being a laboratory of academic innovation and a beacon for arts education. The Arts Academy is a collaborative project between the Boston Public Schools and ProArts Consortium, an association of six internationally known institutions of higher learning specializing in the visual arts, performing arts, and architecture: Berklee College of Music, Boston Architectural Center, the Boston Conservatory, Emerson College, Massachusetts College of Art, and the School of the Museum of Fine Arts.



The Boston Conservatory trains exceptional young performing artists for careers that enrich and transform the human experience. Known for its multi-disciplinary environment, the Conservatory offers fully accredited graduate and undergraduate programs in Music, Dance, Theater, and Music Education, and presents over 200 performances each year by students, faculty, and guest artists. The intimacy of its class settings provides a student-centered atmosphere that is uniquely intensive and supportive. The Conservatory Connections programs provide exceptional student performances for various community organizations. The Boston Conservatory is committed to sharing the talent of their students with a variety of audiences who are unable to attend traditional performances. The objectives of this program are:

- To connect with a diverse community of audiences;
- To develop community partnerships throughout the Boston area;
- To provide performance opportunities for their students;
- To introduce students to new audiences and non-traditional performance spaces;
- To make art more accessible to the community; and

- To highlight the extraordinary talent of the Conservatory to the Boston community.

## **BOSTON SYMPHONY ORCHESTRA**

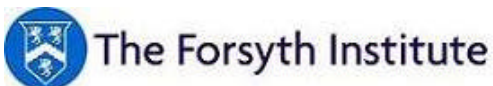
Education is a very important piece of the Boston Symphony Orchestra's (BSO) mission. The BSO has dedicated themselves to spreading joy and educating children about music since 1959, when Harry Ellis Dickson established the BSO's Youth Concerts. Youth and Family concerts introduce the wonders of great music into the lives of elementary, middle school, and high school students. More than 60,000 students throughout New England benefit from Boston Symphony Orchestra's Education & Community Programs. The students come from a wide range of ethnic and economic backgrounds. The BSO's Outreach programs include The Godparent Program, Days in the Arts at Tanglewood, Project STEP, a Concerto Competition for advanced high school students, and Community Partnerships with schools and community leaders.



Emmanuel's mission is to educate students in a dynamic learning community rooted in the liberal arts and sciences and shaped by strong ethical values and a Catholic academic tradition. An Emmanuel education challenges students to become critical thinkers, ethical decision makers, and contributing members of the local community and the global society. The Jean Yawkey Center for Community Leadership at Emmanuel College focuses on developing service opportunities and leadership skills for Emmanuel students and building connections with the young people of the city of Boston through after-school and summer programs. The Office of Government, Community & Public Relations maintains relationships with its neighbors, community leaders, local, state and federal government officials, and alumni, positively promoting the developments and initiatives of the college.



The Church of Christ, Scientist, was founded by Mary Baker Eddy with a healing mission that embraces all humanity. The Church is designed to make the healing and educational system known as Christian Science available and accessible to everyone. Christian Science enables humans to understand their relationship to a loving God and their relationship to each other. This understanding improves their lives, their communities and the world.



Forsyth's mission is to improve human health, through innovative research and education in oral and craniofacial biology and related biomedical sciences. Founded in 1910 as a dental infirmary for children, Forsyth provided over 500,000 children in Boston with free dental care. In the 1960's, the organization switched its focus from the treatment of dental diseases to prevention of disease through research. Today, Forsyth leads in the discovery, communication and application of breakthroughs in oral health and disease prevention.

Forsyth also remains committed to the community through initiatives such as:

- The Educational Outreach Program, which provides opportunities for high school students from socio-economic backgrounds or population groups under-represented in the sciences to work side-by-side in the laboratory with world-renowned scientists engaged in cutting-edge research.
- Center for Children’s Oral Health School-based Prevention Program provides elementary school students with dental care, prevention and education. The program’s primary objective is to increase access to oral health care and improve overall health by providing preventive dental care.



The overarching mission of the Harvard School of Public Health is to advance the public's health through learning, discovery, and communication. HSPH’s objectives are:

- to provide the highest level of education to public health scientists, practitioners, and leaders;
- to foster new discoveries leading to improved health for the people of this country and all nations
- to strengthen health capacities and services for communities; and
- to inform policy debate, disseminate health information, and increase awareness of public health as a public good and fundamental right.



In addition to its ongoing efforts to engage new audiences in its world-class programming, the Huntington Theatre Company has always maintained a strong commitment to education and community outreach. This commitment is reflected in a wide range of initiatives that include classroom curriculum-based activities like our Student Matinee Series, intensive after school programs such as *The Acting Class* and *Young Voices*; in-depth collaborations with schools and community-based service organizations; special access services that provide ASL-interpretation and audio description for the deaf and blind; and community ticketing programs that provide affordable tickets to underserved members of our community.

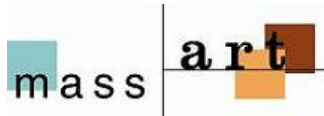
## ISABELLA STEWART GARDNER MUSEUM

The Isabella Stewart Gardner Museum’s Education Department develops programs and resources that promote in-depth experiences with works of art. Ongoing partnerships with neighborhood schools and community organizations are central to their mission, and help inform the creation of interactive experiences for the general museum visitor.



THE MARY BAKER EDDY LIBRARY  
for the BETTERMENT of HUMANITY™

The Mary Baker Eddy Library, designed as both a museum and a research facility, is one of Boston's newest cultural institutions. The library/museum encourages visitors to discover the power of ideas through history to inspire individuals and change the world, uncover the contemporary search for life's deeper meaning, and research the ideas, life, and achievements of one of history's great women, Mary Baker Eddy. The Mary Baker Eddy Library offers a variety of opportunities for teachers and other educators, as well as the general public, to engage in enriching learning, cultural, and community activities related to the Library's exhibits and collections.



The Center for Art and Community Partnerships is MassArt's primary vehicle for engaging the college's artistic, scholarly, and educational expertise with the broader community. MassArt is dedicated to fostering creative thinking and artistic expertise in its students, faculty, staff, and alumni. Working with the college, the Center for Art and Community Partnerships engages that creative energy in the conceptualization and support of collaborative, art-based projects, programs, and partnerships with local institutions, organizations, and community members.

### Massachusetts College of Pharmacy and Health Sciences

Massachusetts College of Pharmacy and Health Sciences (MCPHS) is a nationally and internationally recognized leader in the education of health professionals. As a private and independent institution with a long and distinguished history, the College provides traditional and non-traditional programs of study that serve the needs of the community and promote the following core values: innovative teaching which fosters student-centered learning; integration of the liberal arts and basic sciences with professional studies; scholarship which fosters life-long learning and continuing professional development; cross-cultural perspectives on health issues; leadership and caring among health practitioners.



The Museum of Fine Arts, Boston, is one of the largest privately funded institutions in the country, receiving less than 1% of its annual budget from federal, state, and local government sources. Founded in 1870, the Museum of Fine Arts, Boston houses an estimated 350,000 works of art in its permanent holdings. The Museum's encyclopedic collection includes European and American paintings, decorative arts and sculpture; art from Asia, Africa, Oceania, and the Ancient Americas; Ancient Egyptian, Nubian, Near Eastern and Classical art; musical instruments; textiles and costumes; prints, drawings and photographs; and contemporary art. The Museum of Fine Arts Boston is committed to making both the museum and its activities accessible to visitors with disabilities and strives to engage all audiences with the collections of the MFA and art of the world through accessible and imaginative learning experiences.



NATIONAL  
BRAILLE  
PRESS

National Braille Press helps blind children and adults achieve self-sufficiency and independence by publishing practical information in braille and by advocating for literacy—because the ability to read and write, in braille or print, is the single most important gateway to opportunity. Blind readers' need for current, useful reading matter motivated our founder in 1927 to begin publishing the first weekly newspaper in braille. Almost 80 years later, National Braille Press produces braille novels, children's storybooks, school textbooks, and practical titles on topics from computers to cooking, handicrafts to health. National Braille Press's philosophy that blind readers should pay equal retail price as their sighted peers means that the operational budget is supported nearly one-third by charitable underwriting.

New England  Conservatory  
Founded 1867

New England Conservatory has a strong commitment to bringing the arts to the Boston community. The mission of the Community Performances and Partnerships Program of New England Conservatory is to link New England Conservatory undergraduate and graduate students with the Boston community, while also providing students with performance and teaching skills that are integral to a career in music in the 21<sup>st</sup> century. Performances in this program are interactive and prepare students to effectively communicate with audiences of all ages. NEC's community partners represent a broad spectrum of organizations, from schools and day-care centers to hospitals and homeless shelters, and their partnership performances take place in locations throughout Boston and the New England region. The Office of Community Collaborations has played an important role in the creation of innovative Conservatory/community-based recruitment and matriculation strategies in association with the Music History Department, the Boston Music Education Collaborative, the Riley Foundation Endowed Recruitment Fund, and the NEC Admissions Office.



The Office of Government Relations and Community Affairs is a multi-disciplined unit that promotes and enhances Northeastern University's position as a national research, practice oriented, student centered, urban institution of higher education by:

- Creating a receptive environment for Northeastern University by establishing constructive relationships with the community and the federal, state and municipal levels of government;
- Developing and coordinating a comprehensive urban outreach strategy utilizing the university's academic and financial resources to address the areas of service learning and education, economic development, health and employment training; and
- Operating and promoting University scholarship programs, community-based programming, special events and initiatives focused on servicing the diverse needs of the community.



The School of the Museum of Fine Arts, Boston (SMFA), is a unique institution, dedicated to educating artists and focused on fostering creative investigation, risk-taking, and individual

vision. SMFA does this by emphasizing studio practice and by offering students an unusual amount of freedom in their coursework. An artist's career is a living thing—it needs care and attention. The Artist's Resource Center (ARC) makes connections with educational institutions, museums, social service programs, art studios, galleries, health care facilities, cultural institutions, and commercial businesses. The ARC is a unique resource offering career advising, job links, internships, professional-focus courses, and community-partnership opportunities that help to forge long term relationships for students and faculty within the diverse communities in which they live and work.



The Scott/Ross Center for Community Service facilitates and promotes community service and service learning for Simmons College faculty, staff, and students. The Center serves the Greater Boston community by developing reciprocal partnerships while enriching and expanding students' educational and co-curricular experiences. The Simmons Institute for Leadership and Change (SILC) sponsors programs, activities, and resources that help initiate social change for women and girls, raise women's issues to the state and national political level, and reach out to audiences diverse in age, class, sexual orientation, culture, and educational background. SILC-sponsored projects take place on the Simmons College campus and in the Greater Boston community, including conferences, lecture and discussion series, special events, and networking opportunities. All SILC activities are carried out with the community, not for the community. Thus, the model for SILC is not the traditional charity or philanthropy organization, but genuine collaboration and active promotion of agency. Simmons' collaborative model of community-based organizing emphasizes activism.



Wheelock College, a private college with a public mission, is recognized as a national leader in its professional fields – child life, social work, and education. Wheelock carries out this mission by providing a sound education in the arts and sciences and in the professions. The intention of the Wheelock Family Theatre is to make theatre a vital force in people's lives. To realize that goal, Wheelock makes quality theatre accessible to all segments of the greater Boston community. Their commitment to reasonably-priced theatre makes full access a reality rather than a catch phrase. They mount productions at high standards that challenge designers, directors, and actors in innovative productions for the diverse public they entertain. Wheelock calls itself a family theatre because they produce family-oriented modern drama, children's classics, musicals, and original work. Their casting policy is to feature multicultural and intergenerational casts that truly reflect their audience and the larger society. Non-traditional casting is a feature of all productions. WFT consistently casts people of different cultures, races, and ages as a reflection of their audiences and society at large. The Wheelock Family Theatre is a place where artists and audience feel respected and valued, and that is why it is a vital force in people's lives.



Founded in 1904, Wentworth Institute of Technology is an independent, co-educational, nationally-ranked institution offering career-focused education through 16 bachelor's degree programs in areas such as architecture, computer science, design, engineering, engineering technology and management of technology. Wentworth's unique three-part experiential learning model combines classwork, laboratory/studio work, and cooperative education to provide students with the hands-on approach to learning. Wentworth's Center for Community and Learning Partnerships offers an amalgam of high quality college courses and services created to address the needs of the Mission Hill and Fenway communities. Wentworth has over the last 22 years created collaborations, offered services and expanded its scholarship program to improve the quality of life for its neighbors and its students. Residents of the Mission Hill and Fenway communities are able to access out-of-school youth programming, college degrees, employment training, and new career opportunities; and students acquire real-world training, opportunities to explore career options, and enhanced employability skills such as communication, problem solving, and leadership as well as awareness of community and social problems.



The mission of the YMCA is to build health of spirit, mind and body based on the highest ideals of the Judeo-Christian heritage, and to improve the quality of life for children, individuals, families, and communities in the cities and towns of greater Boston. Whether you go there to play basketball, learn to swim, attend an after-school program, or volunteer your talent, the Y is a place where everybody knows your name. Since 1851 the YMCA of Greater Boston, one of the area's premier non-profit organizations, has served the changing needs of its community. When you step inside one of the 16 facilities in Greater Boston, you immediately notice the Y difference. Men and women, boys and girls, families, people of every age, religion, background and income level are welcome.

# COMMUNITY PARTNERSHIP

## Programs

*“There is a difference between access and outreach. Outreach involves touching the community and hearing what they want....Deep impacting access is where institutions form long term relationships with community organizations...”*

-Judy Berk, Executive Director,  
Cultural Access Consortium

### IN THIS SECTION:

- Youth Programs by Institution

## Youth Programs

**Berklee College of Music**  
**Curtis Warner, Asst. V.P. Community & Governmental Affairs**  
**Tel. 617-266-1400**  
**Email: [cwarner@berklee.edu](mailto:cwarner@berklee.edu)**

**James McCoy, Director, Education and Community Partnerships**  
**Tel: 617-747-2357**  
**Email: [jmccoy@berklee.edu](mailto:jmccoy@berklee.edu)**  
**Website: [www.berklee.edu](http://www.berklee.edu)**

- 
- City Music program – a strategic initiative designed to engage musically talented urban 6<sup>th</sup>-12<sup>th</sup> graders in a year-long, out-of-school time music education program.
  - The Music Mentoring Program is designed for students in 7<sup>th</sup>-12<sup>th</sup> grades who are interested in improving their music skills as well as exploring a career in music. Faculty and student mentors provide theory classes and one-to-one instrumental/vocal coaching twice per week during the school year.
  - The Saturday Preparatory School, located on site at the Boston Arts Academy, is designed to provide an early music education for Boston residents in grades 6-8. Berklee-alumni serve as faculty and implement a Berklee designed curriculum that incorporates a college campus experience through select field trips to Berklee's campus.
  - The Saturday Upper School involves tailored classroom and musical training for select Boston area high school students who have participated in one or more of Berklee's other City Music Program components. The program that runs for 28 instructional weeks over a 9 month period, provides intensive, focused instruction which includes weekly private lessons, a musicianship/theory class, two additional hours of ensemble study and master classes taught by visiting artists.
  - The Summer Youth Scholarship for Talent and Excellence in Music (System-5) is a full-tuition scholarship for Boston high school juniors and seniors to attend the 5 week Berklee Summer Performance Program. Students apply and audition for spaces in the program which emphasizes jazz and other forms of urban contemporary music. System 5 scholars showcase their talent in a performance presented to the local community at the end of their program.
  - The Continuing College Scholarship Award was designed for SYSTEM 5 scholarship students who have successfully completed the Berklee Summer Performance Program. Students receive four-year full-tuition scholarships to attend Berklee College of Music. Scholarship recipients are often students who have been associated with the College through various outreach programs.
  - Community Service Work-Study Program – approximately 40 Berklee students per year work in community-based non-profit organizations and schools in Boston, assisting with music education, literacy tutoring, and program administration.

---

**Boston Arts Academy**  
**Helen Russell, Director of Communications & Program Development**  
**Tel. 617-635-6470 ext. 328**  
**Email: [hrussell@boston.k12.ma.us](mailto:hrussell@boston.k12.ma.us)**  
**Website: [www.boston-arts-academy.org](http://www.boston-arts-academy.org)**

- Boston's only performing arts high school that offers free performance outreach to city schools.
  - String orchestra outreach in Dorchester 4 days/week at McCormick, Murphy and Devon schools – 120 students taught violin by BAA teacher.
-

**Boston Conservatory****Aixa Kidd, Assistant Dean for Student Affairs****Tel. 617-912-9150****Email:** [akidd@bostonconservatory.edu](mailto:akidd@bostonconservatory.edu)**Website:** [www.bostonconservatory.edu](http://www.bostonconservatory.edu)

- Free and or low cost faculty and student performances – dance, theatre, opera and musical ensembles - that are open to the public.
- 

**Boston Symphony Orchestra****Contact: Myran Parker-Brass, Director Education & Community Programs****Tel. 617-638-9376****Email:** [mparker-brass@bso.org](mailto:mparker-brass@bso.org)**Claire Carr****Coordinator, Education & Community Programs****Tel. 617-638-9375****Email:** [ccarr@bso.org](mailto:ccarr@bso.org)**Leslie Wu Foley, Associate Director Education & Community Programs****Tel. 617-638-9377****Email:** [lwufoley@bso.org](mailto:lwufoley@bso.org)**Website:** [www.bso.org](http://www.bso.org)

- School partnerships with Boston Public Schools include musician residencies with BSO musicians.
  - Community Partnerships with Roxbury Consortium, Chinatown and Cambridge communities
  - Young Musicians Card - discount card to attend BSO concerts for high school students.
  - College Card - discount card to attend BSO concerts for college students.
  - Days in the Arts - residential arts program at Tanglewood for middle school students.
  - Professional development workshops for classroom and arts education teachers.
  - BSO Education Resource Center - extensive arts lending library and media/technology center for teachers housed at the Boston Arts Academy.
  - Cultural partner for the Boston Arts Academy.
  - Web resources including curriculum materials, "Explore the Orchestra", "Travel the Timeline" and "Recipe for a Concert".
  - Rush Tickets - reduced price tickets available 1 hour before concerts.
- 

**Emmanuel College****Contact: Sarah McCarthy Welsh, V.P. Government & Community Relations****Tel. 617-264-7756****Email:** [welsh@emmanuel.edu](mailto:welsh@emmanuel.edu)**Website:** [www.emmanuel.edu](http://www.emmanuel.edu)

- Emmanuel students provide literacy training for elementary school students in after-school settings – St. Francis de Sales after school program, Farragut and Ellis Mendel Elementary and Jumpstart.
  - Jean Yawkey Center for Community Leadership – student led service projects serving the Greater Boston Food Bank, The Franklin Park Zoo, Boston Rescue Mission and Project Hope among other community groups.
-

**The Forsyth Institute**  
**Educational Outreach Program**  
**Mary-Kathleen Deloge, Program Coordinator**  
**Tel: 617-892-8201**  
**E-mail: [mdeloge@forsyth.org](mailto:mdeloge@forsyth.org)**  
**Website: [www.forsyth.org](http://www.forsyth.org)**

**The Forsyth Institute**  
**Department of Marketing and Public Affairs**  
**Jennifer Kelly, Director**  
**Tel: 617-892-8602**  
**E-mail: [jkelly@forsyth.org](mailto:jkelly@forsyth.org)**

The Educational Outreach Program offers Boston high school students opportunities for exposure to educational and career opportunities in science research:

- **The Visiting Scientists Program:** Researchers and technicians from The Forsyth Institute visit Boston high school classrooms to talk about their area of research expertise and their own careers in research. Students learn about careers in science and are given the opportunity to ask questions of the visiting scientist.
- **After School Workshop:** The After School Workshop invites interested high school students and their teachers to The Forsyth Institute one afternoon following the school day. Students hear presentations from Forsyth staff and are given a tour of the Institute. The students then participate in a hands-on laboratory experiment in the Forsyth laboratory or discipline of their choice. A question and answer session follows this laboratory session which gives students the opportunity to discuss their findings and impressions
- **Summer Internship:** The summer internship is an eight-week paid internship in one of Forsyth's laboratories. Students are paired with Forsyth researchers who act as mentors. At the end of the eight-week internship, a public presentation and awards ceremony is held, where students exhibit posters and give presentations describing what they have learned.  
For information on Disabilities Access and General Community Programs contact Jennifer Kelly at 617-892-8602.

---

**Harvard School of Public Health**

**Contact: Bruce Smith, Director of Government & Community Programs**

**Tel. 617-384-5488**

**Email: [besmith@hsph.harvard.edu](mailto:besmith@hsph.harvard.edu)**

**Website: [www.hsph.harvard.edu](http://www.hsph.harvard.edu)**

- HSPH Environmental Health Education Project, an intensive yearlong program on the environment and health for 5<sup>th</sup> graders, the introduction and implementation of before school and after-school science clubs, and one-time programs on physiology and environment.
- Harvard Prevention Research Center coordinates a local youth task force in an effort to encourage Boston area youth to actively participate in planning and advocating a healthier environment in their neighborhoods and schools.
- Harvard Research Apprenticeship Program is a 7 week paid summer internship program for high school sophomores, juniors or seniors, 15 years old or older who possess a demonstrated interest in the health sciences and related research. Boston residency or attendance in a Boston city school is required. Selected students participate in a multifaceted program that includes relevant work experience in either a laboratory or behavioral science setting. Students chosen are required to participate the full 7 weeks of the program.

---

**Phillips Brooks House Association (A student-run public service organization at Harvard University)**

**Maria José Dominguez, Assistant Director, Phillips Brooks House**

**Tel: 617-495-5526**

**Fax: 617-496-2461**

[mduoming@fas.harvard.edu](mailto:mduoming@fas.harvard.edu)

**Website: [www.pbha.org](http://www.pbha.org)**

- Mission Hill Youth Collaborative is a gathering of community-based organizations in Mission Hill supported by students and staff of Harvard. MHYC supports programs such as : Mission Hill Community Centers; Mission Works; Mission SAFE; Mission Pride an after-school drop in center; BLOCK a program giving teens the opportunity to write and produce their own music; Sociedad Latina; Phillip Brooks House Mission Hill Programs; Whittier Street Health Center; the Roxbury Tenants of Harvard Assn.
- 

**Huntington Theatre Company**

**Contact: Donna Glick, Director of Education**

**Tel. 617-266-7900**

**Email: [djglick@huntingtontheatre.bu.edu](mailto:djglick@huntingtontheatre.bu.edu)**

**Melinda J. Jaz**

**Education and Community Associate**

**Tel: 617.273.1564**

**[Mjaz@huntingtontheatre.bu.edu](mailto:Mjaz@huntingtontheatre.bu.edu)**

**Website: [www.huntingtontheatre.org](http://www.huntingtontheatre.org)**

- Codman Academy Charter School (Dorchester) collaboration - an experimental program involving 30 students/year that uses theatre as a tool for learning language arts (Plays for Literacy program).
  - Dramatic Developments pilot program in collaboration with the Boston Public Schools. Currently working with over 80 students at the Umana Barnes Middle School in East Boston using theater as a tool for engagement and building literacy.
  - Afterschool Programs- 3 sequential acting classes (Acting One, Acting Too and Scene Study); the 4:15 Youth Touring Theatre, Know the Law and the Young Voices playwriting program.
  - Student Club card- providing youth participating in after school programs a club card that enables students to receive complimentary tickets to the Huntington until they're 21.
  - Student Matinees - subsidized tickets to morning matinees and complimentary tickets to school groups with special needs.
- 

**Isabella Stewart Gardner Museum**

**Contact: Johnetta Tinker, Director of Community Programs**

**Tel. 617-278-5126**

**Email: [jtinker@isgm.org](mailto:jtinker@isgm.org)**

**Website: [www.isgm.org](http://www.isgm.org)**

School Partnership Program – designed to build close working relationships with teachers, students, and administrators in 5 neighboring schools all within walking distance from the Museum. Partnering teachers bring their students to the Museum for several visits throughout the school year to work collaboratively with Museum educators to design programs that are unique and relevant to the students' experiences inside as well as outside the classroom.

- Family Night - students share their experiences, knowledge, writing, and studio projects from the year's partnership.
- Button Program - enable students to visit the Museum with their families free of charge.
- Teacher Institute and half-day Teacher Retreat - opportunities to expand personal and professional connections to the Museum.

Community Partnership Program - multiple visits for 6 community partnering groups are designed to increase student's familiarity with the museum, build relationships, invite ongoing exploration and

broaden access to information and resources. Groups are paired with community professionals in the YMCA's Black Achievers program who volunteer their time to act as role models.

- Community Creations – students create works of art from once/month visits which are hung in the museum for a week and then donated to community center/church as permanent installation. Transportation is provided for students, family and friends to attend exhibition opening celebration.
- Museum Associates Program – paid internships for 2 high school students to explore museum career options and develop teaching experience.
- Neighborhood Nights – held 3 nights for free during the summer to bring diverse audiences to the museum and celebrate the diversity and cultural richness of the city.  
and celebrate the diversity and cultural richness of the city.

---

**Mary Baker Eddy Library for the Betterment of Humanity**

**Mark Thayer, Art Director**

**Tel. 617-450-7315 or 617-450-7000**

**Email:** [thayerm@marybakereddylibrary.org](mailto:thayerm@marybakereddylibrary.org)

**Website:** [www.marybakereddylibrary.org](http://www.marybakereddylibrary.org)

- Explore two floors of interactive exhibits including: a sound and light show in the world-famous three-story Mapparium®; the Hall of Ideas® where quotes from history's great thinkers flow from a fountain; and the Monitor Gallery™, where you can go on deadline for a Pulitzer Prize-winning newspaper. The Library also houses the Mary Baker Eddy Collections and public reference and research rooms.
- The Mapparium: An Inside View 1935 – 2005: celebrate the Mapparium's 70<sup>th</sup> anniversary which includes artifacts and letters, on view for the first time, related to the history, appeal and significance of the Mapparium, the world's only three-story stained glass globe. Exhibit open through January 2006.
- Fractions of Time Well Spent - a new photography exhibit running from October 18 through January 29, 2006, featuring images, artifacts, and documentary evidence from The Mary Baker Eddy Library collections. The exhibit focuses on daily life in the Mary Baker Eddy household (1890-1910) as seen through the lenses of three of her workers. The show highlights the emergence of photography as a means of chronicling every day life and encourages visitors to consider their own personal approach to capturing life today.

---

**Massachusetts College of Art (MassArt)**

**Sandy Weisman & John Giordano, Co-Directors, Center for Art & Community Partnerships**

**Tel. 617-879-7527**

**Email:** [sweisman@massart.edu](mailto:sweisman@massart.edu) or [jgiordano@massart.edu](mailto:jgiordano@massart.edu)

**Website:** [www.massart.edu/partnerships](http://www.massart.edu/partnerships)

**Liz Rudnick, K-12 Coordinator, Continuing Education**

**Tel. 617-879-7174**

**Email:** [lizrudnick@massart.edu](mailto:lizrudnick@massart.edu)

**Ricardo Barreto, Director, Urban Arts Institute**

**Tel. 617-879-7970**

**Email:** [rbarreto@massart.edu](mailto:rbarreto@massart.edu)

**Website:** [www.urbanartsinstitute.org](http://www.urbanartsinstitute.org)

- Sharing Our Stories – an after school type program that involves collaboration with 2<sup>nd</sup>-3<sup>rd</sup> grade students and classroom teachers at Farragut Elementary to improve literacy through visual arts and writing.
- Saturday Studios for grades 4-12. MassArt has offered this program for the last 55 years as an introduction to art making processes. Sessions last 8 weeks and are offered in the spring and fall semesters. Scholarships are available for this program.

- Summer Studios for 11<sup>th</sup> and 12<sup>th</sup> graders. Pre-college summer studio program. Scholarships available for this program.
- Creative Vacation for grades 4-10. Two-week program in July designed for students who want to explore, experience and expand their knowledge of visual arts. Scholarships are available for this program.
- Xtreme! Week for 7<sup>th</sup> – 12<sup>th</sup> graders. Intensive one-week immersion in drawing and fashion design classes that culminate in a student exhibition and fashion show during February and April vacations. Scholarships are available for this program.
- The Art of Landscape – MassArt students work with Boston Public Schools 3<sup>rd</sup> graders and their parents/guardians to draw from local landscapes designed by Frederick Law Olmstead. Program includes professional development for 2 Boston Public Schools teachers.
- Kids to College – MassArt students work with 6<sup>th</sup> graders in a Boston Public School to develop college awareness.
- Youthworks/Teen Curators – 12 Boston teenagers receive intensive training in the visual arts and curatorship. Teenagers work with influential artists to create exhibition projects for public audiences.
- Youth @ Art Tech collaboration with Wentworth. One-week summer program for middle school students as one component of four-week program. Focus on fashion. Scholarships are available for this program.
- Looking to Learn – gallery education program that brings K-12 students from Dorchester, Roxbury, East Boston, South Boston Jamaica Plain and Brighton to MassArt’s Bakalar, Paine and Arnheim galleries to develop visual thinking through interactive, inquiry-based activities.

---

**Massachusetts College of Pharmacy & Health Sciences**  
**George Humphrey, Executive Director of College Relations**

**Tel. 617-732-2909**

**Email:** [george.humphrey@bos.mcphs.edu](mailto:george.humphrey@bos.mcphs.edu)

**Website:** [www.mcphs.edu](http://www.mcphs.edu)

- *Creando Futuros* (Creating Futures) program established to recruit and retain Latinos in health sciences; recruitment from schools with large Latino populations – 2 month Saturday program with certified Science teacher; Students completing program are given a \$300 stipend.
- Summer day camp for diabetic children ages 6 to 12.
- Health careers awareness programs for Boston middle school students.
- Scholarships available for groups under-represented in the health sciences in addition to MCPHS’ general scholarship programs.

---

**Museum of Fine Arts, Boston**  
**Adina Sabghir, Manager of Youth and Family Learning**

**Tel. 617-369-3309**

**Email:** [asabghir@mfa.org](mailto:asabghir@mfa.org)

**Jennifer Burkin, Community Arts Assistant (for Artful Adventures)**

**Tel. 617-369-3303**

**Email:** [jburkin@mfa.org](mailto:jburkin@mfa.org)

**Linda Apple, Director Volunteer & Community Programs**

**Tel. 617-369-3736**

**Email:** [lapple@mfa.org](mailto:lapple@mfa.org)

**Hannah Goodwin, Manager of Accessibility**

**Tel. 617-369-3189 or 617-267-9703 (TTY/TDD)**

**Email:** [hgoodwin@mfa.org](mailto:hgoodwin@mfa.org)

Website: [www.mfa.org](http://www.mfa.org)

**Zakiya Thomas**

**Citizens Bank Foundation, Manager of Community Outreach**

**Tel. 617-369-3295**

**Email: [zthomas@mfa.org](mailto:zthomas@mfa.org)**

- Citizens Bank Foundation Wednesday evenings at the MFA – pay-as-you-wish admission after 4:00 p.m on Wednesdays throughout the year.
- Community Open Houses on the following Monday holidays: Columbus Day, Martin Luther King, Jr. Day, Memorial Day. Free admission to Museum, with lots of events and activities.
- Family Night Out—Fun, family-oriented program on Wednesday evenings during July and August. Pay-as-you-wish admission after 4:00 p.m
- Artful Adventures—For community groups, a participatory and interactive program for children from 5 years through high school, of all abilities. Contact the Museum at 617-369-3303 for scheduling.
- Children’s Room—a drop-in program weekday afternoons for children ages 6 –12.
- February and April School Vacation Week programs for families, generally free with Museum admission.
- College & Graduate Student Internships – positions are generally unpaid.
- Teen-to-Teen—Docent program provides opportunities for diverse group of teenagers to become guides at museum.
- Feeling for Form—For visitors of any age who are blind or have low vision, a program of tactile tours of sculpture and paintings, including verbal descriptions by trained staff and volunteers.
- A Hands Reach to Art—for visitors who are deaf or hard of hearing, a selection of gallery tours, performances, and demonstrations are presented in American Sign Language or are sign language interpreted.

---

**National Braille Press**

**Tanya Holton, V.P. for Development**

**Tel. 617-266-6160 ext. 15**

**Email: [tholton@nbp.org](mailto:tholton@nbp.org)**

**Amy Ruell**

***ReadBooks! Because Braille Matters Program, National Program Manager***

**Tel: 617-266-6160 ext. 34**

**Email: [aruell@nbp.org](mailto:aruell@nbp.org)**

**Website: [www.nbp.org](http://www.nbp.org)**

- National ReadBooks! program – free braille literature and resources offered to blind children, ages 0-7 and their parents/guardians to encourage braille literacy among blind and visually impaired children across the country.
- Children’s Braille Book club – one of the missions of the National Braille Press is to promote literacy among those who are blind or visually impaired and the Children’s Braille Book Club features a new print/braille book every month with low subscription costs.

---

**New England Conservatory**

**Calvin Hicks, Director Community Collaborations**

**Tel. 617-585-1136**

**Email: [clhicks@newenglandconservatory.edu](mailto:clhicks@newenglandconservatory.edu)**

**Tanya Maggi, Director Performance Outreach**

**Tel. 617-585-1243**

**Email:** [tmaggi@newenglandconservatory.edu](mailto:tmaggi@newenglandconservatory.edu)

**Website:** [www.newenglandconservatory.edu](http://www.newenglandconservatory.edu)

- NEC students work as teaching artists in Boston area schools such as Orchard Gardens K-8, Mother Caroline Academy and Hennigan Elementary.
- Project STEP (String Training and Educational Program for Students of Color) is an independent organization sponsored by NEC, the Greater Boston Youth Symphony Orchestra, Boston Symphony Orchestra, and Boston University School for the Arts.
- Woodwind and Brass Ensemble Program - this program accommodates 40-50 students in grades 4-12 during the school year in two 15-week semester system modules including weekly private studio instrumental technique classes, including reading and writing music; Theory instruction, including music composition. Ensemble skills instruction, including interpretive and improvisational playing exercises.
- Instrument Family Preschool program – 4 NEC students visit 4 Boston pre-schools to introduce children to string, wind, brass and percussion families of instruments.
- NEC Touring Children’s Opera – program between NEC students and elementary school students that exposes 3<sup>rd</sup> to 5<sup>th</sup> grade students to opera through performance.
- Music education partnership program with 10 Boston public schools and Greater Boston area districts such as Winthrop, Peabody and Barnstable.
- After school programs with the YMCA; United South End Settlement House; Dorchester Boys and Girls club and other neighborhood groups.
- Tuition Assistance based on need; Tuition assistance based on need and merit in Preparatory program.
- Young African-American Musicians: Exploring Advanced Training and Careers in Classical Music and Jazz - a day-long program for promising students, grades 9-12 are conducted by prominent music professors, including members of the NEC Preparatory School Faculty.
- Harmony Grove Research Center for the African Diaspora, Inc. Summer Project: In Harmony Youth and Song – 3-week collaboration to develop an urban educational music and arts program and choral festival for children in 5<sup>th</sup>-8<sup>th</sup> grade in Framingham.
- The Handel & Haydn Society Vocal Apprenticeship Program provides students with the intensive preparatory music instruction and academic guidance necessary to audition and apply to college successfully. Intended for musically talented 4<sup>th</sup> -12<sup>th</sup> graders.

---

**Northeastern University**

**Kathy Kottaridis, Assistant Director of Public Affairs**

**Tel. 617-373-5983**

**Fax: 617-373-3951**

**Email** [k.kottarids@neu.edu](mailto:k.kottarids@neu.edu)

**Larry Brophy, Associate Director Government Relations & Community Affairs**

**Tel. 617-373-3168**

**Website:** [www.grca.neu.edu](http://www.grca.neu.edu) or visit [www.community.neu.edu](http://www.community.neu.edu) for direct links to each program

- Need based scholarships available in various fields of study.
- Scholarships for 20 disabled children attending summer programs at Camp ECHO in Coleman County, NY and Agassiz Village in Poland, Maine.
- Northeastern athletes perform community outreach throughout the year in community centers, after school programs and participate in the national program, “Play It Safe.”
- Fit Kids program conducted by NU’s Physical Therapy Department to improve the health of children and elders through exercise and education.

- Students in NU's Speech-Language Pathology and Audiology program facilitate a weekly storytelling group for children in Boston's homeless shelters in an effort to develop the children's language literacy.
- Various sports clinics for boys and girls in areas such as field hockey, swimming and diving, baseball and basketball.
- Students of NU's School of Pharmacy partner with the American Lung Association to offer programs such as Camp Chest Nut, a one-week summer camp for children with asthma ; Asthma 101 an educational presentation for school teachers and administrators and Open Airways a series for children with asthma that teaches them to manage their condition.
- Speech-Language and Hearing Center provides assessment, treatment, counseling and referral services to children and adults with hearing, communication or swallowing problems.
- High School Outreach Program provides Boston area high school students in grades 9-12 the opportunity to learn about higher education and the field of law through conversations with law school faculty, students and staff and participation in a mock trial.
- *La Fuerza* is a collaboration between NU's School of Law and the Latino Student Cultural Center to encourage Latino students' participation and pursuit of higher education.
- Boston Science Partnership a program that links Boston Public School students in grades 6-12 with Northeastern and other institutions to enhancement student science achievement in grades 6 through 12.
- Information Design: Explaining a Math or Scientific Process connects eighth graders at Boston Renaissance Charter School with graphic design majors at NU.
- Marine Science Center K-12 Outreach program helps students and teachers acquire an understanding of and appreciation for the marine environment off the shores of Eastern Massachusetts. The Marine Center provides many ongoing programs for teachers and students in Greater Boston. Contact [www.marinescience.neu.edu](http://www.marinescience.neu.edu) for more information.

---

**School of the Museum of Fine Arts, Boston**

**Debra Samdperil, Director, Artist's Resource Center and Continuing Education**

**Tel. 617-369-3116**

**Email: [dsamdperil@mfa.org](mailto:dsamdperil@mfa.org)**

**Website: [www.smfa.edu](http://www.smfa.edu)**

- Youth Art in Action – an intensive semester long arts education and leadership development program for at-risk youth in diverse urban communities.
- Art studio program combines mentoring and art collaboration for young people at City on a Hill Charter High School and Mission Main Housing/Community Center.
- Art workshops conducted by senior students and alumni at Boston Public library for children grades K-12.
- High School Summer Program an intensive 4-week program that focuses on drawing, painting, sculpting, ceramics, video and sound production.
- Saturday Workshops designed for students in grades 9-12. Students are encouraged to value the art making process while developing critical thinking and examination skills.

---

**Simmons College**

**Diane Hammer, Institute for Leadership and Change**

**Tel. 617-521-2480**

**Email: [diane.hammer@simmons.edu](mailto:diane.hammer@simmons.edu)**

**Website: [www.simmons.edu/silc](http://www.simmons.edu/silc)**

**Jeremy Poehnert, Scott Ross Center for Community Service**

**Tel. 617-521-2236**

**Email: [jeremy.poehnert@simmons.edu](mailto:jeremy.poehnert@simmons.edu)**

**Website:** [www.simmons.edu/communityservice/](http://www.simmons.edu/communityservice/)

**Jennifer L. McKee**

**Director of Service Learning, Scott/Ross Center for Community Service**

**Tel. (617) 521-2477**

**Email:** [jennifer.mckee@simmons.edu](mailto:jennifer.mckee@simmons.edu)

- America Reads & America Counts Programs providing intensive literacy and mathematics tutoring to students at Ellis Mendel and Farragut schools.
  - Operation Peace - an after school drop in center for low income children in Fenway area; Farragut after school program similar to Operation peace.
  - Farragut School partnership providing after-school tutors and curriculum, in-class teacher support and librarians and support for library
  - Simmons/Mission SAFE after school and summer program provides educational support on the Simmons campus for 30 at-risk 7-11 year old students from the Tobin Community Center.
  - Gaining Early Awareness and Readiness for Undergraduate Programs – partnership with Boston public schools (Mary Curley Middle School and English High School) to provide ongoing support to students from 7<sup>th</sup> grade to 12<sup>th</sup> grade through after school tutoring, Saturday and summer programs.
  - Global Day of Community Service: youth from the America Reads and America Counts programs (and 6<sup>th</sup> graders from the Timilty school) come together with elders in the community to celebrate community service by participating in service projects and getting to know the campus.
  - International Learning Center partnership at the YMCA Central Branch provides tutors to support affordable, high-quality English as a Second Language classes (ESL) to multi-ethnic, low-income immigrant adults in the Boston area.
  - Jumpstart provides tutoring/mentoring services to youth ages 3-5 enrolled in Jamaica Plain Headstart and Ellis Memorial. The Jumpstart Colleges of the Fenway office and site manager are located at Simmons and serves the Colleges of the Fenway area and includes some students from Boston University.
  - Participates in Special Olympic's local swim competition.
  - Strong Women, Strong Girls program works to engage the strong and successful women of today to support the strong and successful women of tomorrow by establishing mentoring programs for female Farragut Elementary School and Mason School students and young females from the Tobin Community Center.
  - Upward Bound Math/Science Program for low income and or first generation high school students in Boston to prepare them for high school by supporting them with after school tutoring, math and science enrichment and test preparation courses. During summer, students live on campus and take courses to prepare them for the upcoming school year.
  - Writers Express program for students interested in writing; 8 full scholarships awarded each year to Boston Public school students.
  - Youth@Art Tech (with Wentworth) program serves 45 middle school youth from the Mission Hill area with access to education and training in video production, fashion design, civil engineering, and social activism.
  - After Hours U/Steps to Success program provides college awareness and readiness programming to 5<sup>th</sup> and 6<sup>th</sup> graders in Brookline.
-

**The First Church of Christ, Scientist**  
**Joan Pedersen, Manager, Local Mother Church Activities**  
**Tel. 617-450-3498**  
**Email:** [pedersenj@churchofchristscientist.org](mailto:pedersenj@churchofchristscientist.org)  
**Website:** [www.churchofchristscientist.org](http://www.churchofchristscientist.org)

---

**Wheelock College & Wheelock Family Theatre**  
**Charles Baldwin, Public Relations Manager**  
**Tel. 617-879-2147**  
**Email:** [cbaldwin@wheelock.edu](mailto:cbaldwin@wheelock.edu)  
**Website:** [www.wheelock.edu/wft](http://www.wheelock.edu/wft)

- Scholarships or work study experience for low income students (Ushering for affordability).
  - Drama workshops with Boston public schools and schools in neighboring districts; students are never refused because of inability to pay.
  - Ticket prices are kept low to encourage group/family attendance.
- 

**Wentworth Institute of Technology**  
**Sandy Pascal, Associate V.P. Community Relations & External Affairs**  
**Tel. 617-989-4478**

**Sean Bender, Director, Community & Learning Partnerships**  
**Tel. 617-989-4992**  
**Email:** [benders@wit.edu](mailto:benders@wit.edu)  
**Website:** [www.wit.edu](http://www.wit.edu)

- Commitment to sponsor Mission Hill Little League for 5 years.
  - Mission Hill After School Program in collaboration with Harvard's Phillip Brooks House operates four days (Monday – Thursday) each week from 3:30 to 5:30 p.m. during the academic year and has been operating for the last 22 years.
  - Mission Hill Summer Camp serves children 6-13 years in a 7 week, full day camp environment a collaboration between Wentworth and Tufts University and co-coordinated by Harvard's Phillip Brooks House.
  - STRIVE is a collaborative effort between the Boston Public Schools (BPS) and Wentworth to train students with learning and emotional disabilities for meaningful work in facilities maintenance, recycling and office assistance. STRIVE students successfully implemented the campus recycling project saving Wentworth thousands of dollars. The Wentworth employees union thereafter established the position of recycling technician to support the student-training program. Students in the STRIVE program are given a stipend throughout their training.
  - Wentworth's School-to-Career program provides vocational training to BPS high school students with significant disabilities. Wentworth understands that vocational training, job placement and post placement support are the most significant factors in establishing economic self-sufficiency for the disabled and therefore trains and hires high school students as employees to maintain student residences.
  - Youth @ Art Tech collaboration with MassArt and other area universities offers low and moderate income youth, ages 12 - 16, an opportunity to learn new skills, utilize their artistic talents and appreciate art while obtaining valuable first-hand experience of college and fine arts environments. Wentworth, Simmons College, Harvard School of Public Health and Massachusetts College of Art offer a summer curriculum comprising six programs from 9:00 a.m. to 3:00 p.m., (lunch is provided at no cost to students) five days each week during the summer.
  - MathCounts a competition for middle school students held at Wentworth for the last 9 years and for which Wentworth awarded full 4-year scholarships to the top winners.
-

**YMCA of Greater Boston**  
**Wendy Zinn, VP Central Branch**  
**Tel. 617-927-8255**  
**Email: [wzinn@ymcaboston.org](mailto:wzinn@ymcaboston.org)**  
**Website: [www.ymcaboston.org](http://www.ymcaboston.org)**

**Edward Escobar, Director Senior, Youth & Family Services**  
**Tel. 617-927-8230**

**Email: [eescobar@ymcaboston.org](mailto:eescobar@ymcaboston.org)**

- After school care in all communities where Y is located. Central Branch hosts a summer day camp and after-school care for 120 children in 3 locations (on-site, and Hurley Elementary and Mission Hill Schools) with programs in dance, health & wellness, art, swimming, and more.
  - E to the Forth teen initiative – caters to teen needs: employment exercise and entertainment. Focus has been in South End and Lower Roxbury where teen participate in programs that promote positive values and prevent negative behaviors.
  - Teen programs in peer leadership, debate, model legislature, culinary arts, sports, health & wellness, wilderness adventures, a drop-in center, dances, and more.
  - Youth sports programs in swimming, lifeguard training, basketball, and karate
  - Houses City-on-a-Hill Charter School.
  - Mason School Partnership – Mason School a Boston public elementary school serving 300 students in Lower Roxbury. The Y provides expertise to their school age care program.
- 



Boston Arts Academy Theatre students and teacher

# COMMUNITY PARTNERSHIP

## Programs

*“If the Alliance can start thinking of not just institutions but the citizens, and what they can offer to local people to really collaborate and form a bridge then that would be helpful.”*

- Jan, Peterborough Senior Center

### IN THIS SECTION:

- Elder Programs by Institution

## Elder Programs

### **Berklee College of Music**

- Berklee students perform at senior centers and homes across the city.
  - Provides complimentary concert tickets to senior and rehabilitative care facilities as part of ongoing outreach to communities.
  - Supports fundraising activities of senior and other community based organizations.
- 

### **Boston Conservatory**

- GentleMuses & HOPES programs – Boston Conservatory faculty and students provide harp music for patients undergoing cancer treatment at Mass General hospital for 10-12 hours/week.
- 

### **Boston Symphony Orchestra**

- Rush tickets – reduced price tickets for seniors available 1 hour before event.
  - Free tickets for BSO and POPS concerts as part of Elder Arts program.
- 

### **Harvard School of Public Health**

- HSPH supports Roxbury Tenants of Harvard adults and seniors programs, including Mission Park senior citizen walking program.
  - Sponsors the Annual Affair to Remember Dinner/Dance in collaboration with the Parker Hill / Fenway Neighborhood Service Center and the Roxbury Tenants of Harvard Senior Citizen's Program.
- 

### **Huntington Theatre Company**

- Citizens Bank Foundation Community Connections Program offering discounted and a limited number of free tickets to local community organizations and groups.
- 

### **Isabella Stewart Gardner Museum**

- Button Program provides free unlimited admission for repeat senior visitors to the Gardner.
- 

### **Museum of Fine Arts, Boston**

- Citizens Bank Foundation Wednesday evenings at the MFA – pay-as-you-wish admission after 4:00 p.m on Wednesdays throughout the year.
- 

### **New England Conservatory**

- Discount for seniors program provides free or discounted tickets to performances at Jordan Hall.
  - Oral History program (as part of Fenway Access program) collaboration with the Huntington Theatre to interpret the stories of seniors in Fenway and surrounding communities.
  - Student internships in senior centers and rehabilitative care facilities throughout Boston and neighboring communities.
  - Music for Senior Citizens - community collaborations offers specially discounted classes in piano to local senior citizens. (Elder Arts piano classes at \$10/class in 10 week cycles on Saturdays)
  - Tuition Assistance provided for seniors in Adult Education programs.
  - NEC performance outreach to various senior centers, hospitals and rehabilitative care facilities throughout Boston and neighboring areas.
- 

### **Northeastern University**

- Community (elder) bus program provides free transportation to dining and shopping destinations on Wednesdays.
  - Elder Arts Program – the NU Center collaborates with the Dept of Government Relations and Community Affairs to provide seniors with complimentary tickets to cultural and musical performances on campus.
  - Match-Up Interfaith Volunteers is a program aimed at reducing social isolation among elders and the disabled in Boston and surrounding communities.
-

- Service Day – NU students, faculty and staff provide volunteer services to elders and local residents in Mission Hill, Fenway and Lower Roxbury neighborhoods.
- Provides 25 free tickets to seniors to attend programs at the YMCA.
- Provides Thanksgiving Dinner on the Sunday before Thanksgiving for over 200 seniors in Fenway neighborhood.
- Thanksgiving Food Drive - NU donates and distributes food to the elderly, community centers, churches and Head Start programs in Greater Boston during October and November.

---

#### **Simmons College**

- Host of annual Senior Citizens Ball for seniors living at Mt. Pleasant and Hale Houses.
- Facilities Access - seniors may use the library and sports facilities at no cost or at discounted rate.
- Seniors may audit classes at Simmons throughout the school year.

---

#### **Wentworth Institute of Technology**

- VITA program – students and staff provide free income tax preparation and filing for neighborhood residents (collaboration with IRS). Program is particularly focused on assisting individuals with low and limited income, individuals with disabilities, non-English speakers and elderly taxpayers.
- Mission Hill/Fenway Technology Goes Home Program an intergenerational program for families where parents or grandparents and their children (an adult and at least one child in grades 4 to 12), learn computer skills together.
- Community Benefit Tuition Waiver & Scholarship Programs – Mission Hill and Fenway residents can take free courses at Wentworth in the Day, Evening and Non-credit program; must be referred by community leader or NBO and meet admission requirements.

---

#### **YMCA of Greater Boston**

- Health and wellness programs for seniors.
  - Discount membership fees for seniors.
- 



Millennium Choir, Gospel Jubilee



Neighborhood Nights 2004, Isabella Stewart Gardner Museum

# COMMUNITY PARTNERSHIP Programs

*“You know when an institution is serious about communities and outreach – when that commitment is stated up front in the mission statement. It has to be a part of the mission [of the institution], you have to own up to it.”*

- Johnetta Tinker, Director Community Programs, Isabella Stewart Gardner Museum

## IN THIS SECTION:

- Disabilities Access
- General Community Programs

## Disabilities Outreach<sup>1</sup> & General Community Programs

### **Berklee College of Music**

- Berklee sponsors professional development seminars for teachers.
- Concert tickets provided for schools and non-profit organizations in Boston such as Boston Public Schools, *Inquilinos Boriquas en Acción* (IBA) and Whittier Health Center.
- Seminars provided for Boston music educators.
- Campus tours and ongoing outreach to neighborhood organizations and schools.
- Complimentary tickets to community organizations and schools as part of their fundraising efforts.
- Community Grant Program – provides in-kind grants to municipal and community-based non-profit organizations for use of Berklee facilities, including the 1,200 seat Berklee Performance Center.
- Urban Outreach Performance Program takes Berklee student ensembles to perform at local public schools and community centers to encourage the study of music and pursuit of higher education.
- Berklee Instrument & Equipment Donation program – instruments and technology based equipment are donated to Boston public schools and other non profits as part of Berklee's instrument recycling program.
- Direct financial contributions to various community based organizations such as Fenway CDC, Health Careers Academy, Dimmock and Fenway Community Health Centers the Boston Police Patrolmens Association among others.

---

### **Boston Conservatory**

- Provides student led projects at the Greater Boston Food Bank.
- Clothing drive for Friends of Boston's homeless.
- Blood Drive for American Red Cross.

---

### **Boston Symphony Orchestra**

- Partnership with the Cultural Access Initiative - members of the blind community attend BSO, POPS and Tanglewood concerts with special pre-concert activities.
- Professional development workshop series for classroom and arts education teachers.
- Community Chamber Concert series - 8 chamber concerts by BSO musicians in venues in the greater Boston area provided free to the community.
- BSO Online Conservatory - web-based interactive multimedia learning modules produced in partnership with Northeastern University.
- Community partnerships in Chelsea, Lynn, Peabody, Lawrence, Worcester, Chinatown, Revere, Cambridge, Boston and the Roxbury Consortium.
- Free ticket program for selected BSO and POPS concerts.
- Repartee Program - subscription program targeted at young professionals in the Boston area.
- Symphony Hall Open House - free event featuring performances, tours and other activities.
- Tours of the Hall provided weekly by our volunteer association.

---

### **Emmanuel College**

- Orientation Service Day – incoming students serve at various social service agencies in Greater Boston including Greater Boston Food Bank, Community Servings, Cradles to Crayons, Charles River Conservancy, St. Francis House, NICE Preschool, Project Hope, The Franklin Park Zoo, Boston Rescue Mission and Saturday/Sunday Bread among other community groups.
- 

<sup>1</sup> See attached access sheet for the list of disability access available at each institution.

- Breast Cancer Walk – to raise money for breast cancer research.
  - Walk for Hunger – to raise money to help support food programs for the poor.
  - Habitat for Humanity – students, faculty and staff volunteer with this program in Ipswich, MA.
  - City Year Serve-A-Thon – students perform community service projects throughout Greater Boston and also raise funds for City Year Boston corps.
  - ESOL program - students, faculty and staff teach English to food service workers within Emmanuel who are non-English speakers.
- 

#### **First Church of Christ, Scientist**

- Free noontime organ recitals during the Spring.
- 

#### **Forsyth Institute**

- Community residents may attend research seminars that are open to the public.
- 

#### **Harvard School of Public Health**

- Member of the Mission Hill / Fenway Technology Goes Home Collaborative, which focuses on developing computer literacy, job training and employment for residents of Mission Hill and the Fenway;
  - Sponsors Public Health forums on issues relating to prevention, Public Health, and health disparities;
  - Sponsors the Harvard Youth Violence Prevention Center Community collaborative, which provides support to Boston area community violence prevention programs;
  - Supports a number of Community coalitions organized to address issues relating to: obesity, nutrition, and physical activity; environmental health; violence prevention; and Injury Control.
- 

#### **Huntington Theatre Company**

- Citizens Bank Foundation Community Connections Program - offering discount and a limited number of free tickets to local community organizations and groups.
  - Out & About Club- free reception (with purchase of tickets) for theatergoers in the gay, lesbian and transgendered communities. Held before select Wednesday evening performances.
  - Night Club – free reception (with purchase of tickets) for theatergoers 35 and under- valid for 1<sup>st</sup> Thursday evening performances.
  - College Night- free post-show reception (with purchase of tickets) for college students following select performances.
  - Student Rush Tickets- discounted tickets for college students
  - Access- in collaboration with Cultural Access Consortium, the Huntington provides American Sign Language interpreted or audio description for at least 4 productions each season including student matinee performances.
- 

#### **Isabella Stewart Gardner Museum**

- Mornings at the Gardner - courses for adults (fee charged).
  - Lectures and Talks for adults.
  - Neighborhood Nights 3 times during the summer – all are free events and open to the public.
  - Tours of the collection to community groups that make request (fee charged).
  - Music Program - presents a season of concerts including performances by the museum's own Gardner Chamber Orchestra, world-renowned chamber music groups and soloists, include the *Sunday Concert Series* and *Young Artists Showcase* from September through May. Ticket prices include museum admission.
  - Frank Hatch First Day Free – January 1<sup>st</sup>, New Years day, each year the museum is open free of charge to the public.
-

### **Massachusetts College of Art**

- Art and Healing – MassArt faculty, students and alumni collaborate with area hospitals such as Dana Farber Cancer Institute, Children’s Hospital , Beth Israel Deaconess Medical Center and Floating Hospital at Tufts-New England Medical Center on various projects and art programs for patients.
- MassArt students act as mentors to Boston Public School students with programs such as Hispanic Office of Planning and Evaluation (HOPE) Steamroller Printmaking project; John Hancock Scholars program; Patrick J O’Hearn school; Daniel Marr Boys and Girls club mentoring; Teen Voices and Gateway Arts.
- Ongoing service learning opportunities for MassArt students in community based and non-profit organizations such as Mission Main Resident Services Corporation; Sociedad Latina Mission Enrichment program
- Various Classroom/Community collaborations between MassArt faculty, students and alumni including Food Stop: Community Meals Program Facility Interior Design and Use Project; Reclaiming Annihilated Architectural Heritage; Design Faculty and Student Collaboration with Boston public schools; Manville School project; Floating Hospital Mural and Lucy Stone after school program.
- Galleries are free and open to the public.

---

### **Massachusetts College of Pharmacy & Health Sciences**

- Direct monetary contributions to various community service organizations.
- Facilities Access - provides facilities free of charge to neighborhood groups on a space-available basis; provides exam space to Boston public schools and Boston Latin High School.

---

### **Museum of Fine Arts, Boston**

- Open Houses in January (MLK Day), May (Memorial Day) and October (Columbus Day – free admission except to special exhibitions which are discounted. Lots of events and activities.
  - February and April School Vacation Week programs for families, generally free with Museum admission.
  - Studio Art Classes & Workshops for children, families and individual adults. Need-based scholarships are available. Contact Dept of Museum Learning and Public Programs at 617-369-3295 or via email [artclasses@mfa.org](mailto:artclasses@mfa.org) to enquire about scholarships.
  - Summer Internships available – positions are unpaid but provide valuable learning experience.
  - Feeling for Form—For visitors of any age who are blind or have low vision, a program of tactile tours of sculpture and paintings, including verbal descriptions by trained staff and volunteers
  - A Hand’s Reach to Art—For visitors who are deaf or hard of hearing , a selection of gallery tours, performances, and demonstrations are presented in American Sign Language or are sign language interpreted.
  - Access to Art —For groups of adults with disabilities or intergenerational groups that include people with disabilities, gallery tours or tours followed by an art-making activity. Program is available in American Sign Language.
  - Film Program – serves to showcase films created by area filmmakers and video artists. Annual film festivals include: African Film Festival; Boston Festival of Films from Iran; Boston French Film Festival; Boston Gay and Lesbian Film and Video Festival and Boston Jewish Film Festival.
  - Lectures, Courses, and Gallery Talks—a range of programs for adult visitors, focusing on the Museum’s collections and exhibitions. Lectures are both free and ticketed, gallery talks are free with Museum admission.
-

## **National Braille Press**

- Because Books Matter – a free resource to new parents and teachers to encourage literacy among children that are blind and visually impaired. Publication available in English and Spanish.
  - Provides high quality braille transcription services to the public.
  - Tours by arrangement - free tours provided of the National Braille Press' 88 St. Stephen Street publishing facility that includes the process of transcribing and printing a braille book.
  - National Read Books program – free braille book bags are distributed to families with blind and visually impaired children ages birth – 7 years in order to promote Braille literacy.
- 

## **New England Conservatory**

- Instrument Family Preschool program involving 4 NEC students visiting 4 Boston pre-schools to introduce children to string, wind, brass and percussion families of instruments.
  - Performance Outreach provides performances and workshops in various communities across Boston and neighboring communities.
  - Students undertake internships in various community based organizations across the city.
  - Tuition Assistance Program for Boston Residents - program gives Boston residents with musical aptitude and limited financial resources an opportunity to enroll in the Preparatory School, the School of Continuing Education, the Summer School, and the Woodwind and Brass Ensemble Program. Children who have shown exceptional ability and are enrolled in the Preparatory Certificate Program will receive primary consideration. Adults and other children may be accepted based upon available openings in a particular instrument and/or course of study. All students receiving tuition assistance are evaluated each semester and are expected to maintain a high level of commitment to their studies.
  - NEC Community Gospel Chorus - the group follows a traditional African-American southern-based aesthetic, as well as an evolved urban-based contemporary repertoire. The chorus's entire musical stance is rooted in Gospel as a grand celebration of the human spirit, rather than as a simply artistic performance or entertainment. The choir is unique because it is comprised of NEC students as well as people from the greater Boston area.
  - Thomas A. Dorsey Gospel Jubilee at Jordan Hall - The Jubilee is a 25-year-old annual tradition at NEC and also features a 200-member NEC millennium Choir. This annual two-day February event is a dedicated celebration and a tribute to the evocative spirit of a particular genre of African-American culture. The Jubilee features gospel choirs, chamber ensembles, and soloists from the New England area, the American South, and the Caribbean. Participants perform and explore African American sacred music, spirituals, celebratory liturgical dance, shape-note, traditional, and contemporary gospel, as well as praise and worship singing.
  - Thomas A. Dorsey Summer Gospel Institute - takes a more detailed look into the roots of gospel music. It now stands as a significant, open-ended, benchmark setting for the study of spirituals, art songs, blues, shape-note, classical composition, and jazz, as well as gospel.
  - NEC/ACT-SO: Afro-Academic Cultural, Technological and Scientific Olympics - ACT-SO is a major project of the National Association for the Advancement of Colored People (NAACP). Through the ACT-SO project, students who have won local NAACP chapter semi-finalist competitions in the fields of Humanities, Performing Arts, Sciences, Visual Art, and Music, are provided with an opportunity to complete and receive national recognition scholarship awards in their chosen field at the annual NAACP national convention, which runs concurrently with the ACT-SO finalist competitions. Mentorship is a significant component of the NEC/ACT-SO project.
  - Drums, Pianos, and Voices: Exploring African-based Musics in the New World - is a series of four professional development workshops for teachers in the Boston Public Schools and NEC students, faculty, and staff.
-

- Roland Hayes/Marian Anderson Concert Series – collaboration with the preeminent Museum of Afro-American History on Beacon Hill, presents 8 concerts each year at the museum. Performances cover a broad range of musical genres including Haitian, baroque, jazz, spirituals, ragtime, and African-American art songs, and feature the Coleridge String Quartet presenting classical works by European, South and North American composers of African descent.
- Jewish Musical Heritage of Pre-War Eastern Europe *Yelena Neplok, Instructor*, course for adult students introduces a unique musical heritage stemming from Jewish composers and their communities in pre-war Eastern Europe, especially Russia. The music encompasses both Jewish classical and folk traditions, ranging from Klezmer to chamber music, art song, folk dances, and liturgical music sung in Yiddish and Hebrew.
- Need based tuition assistance.
- Need and merit based tuition assistance in Preparatory program.
- Internships to various community based organizations.
- Free or low cost monthly student performances that are open to the public.

---

### **Northeastern University**

- Community Use Privilege program – provides 50 free daily passes to the Marino Recreation center on a first come, first served basis.
  - NU's School of Law provides reference assistance and library access to *pro se* patrons and members of the public.
  - Provides rent free space to house the Whittier Street Health Center at Renaissance Park.
  - Caregiver Program – collaboration between NU's School of Nursing and community groups to offer annual program that connects low income caregivers living in communities surrounding Northeastern with information and resources.
  - Community Health Outreach – a collaborative program between NU's School of Pharmacy and Harbor Health Services Inc to provide monthly health outreach services for residents of Dorchester.
  - Direct monetary contributions to community groups as well as complimentary tickets to NU athletic events
  - NU School of Law Cooperative Legal Education – law students complete internships with a legal service such as the public defender, government group or non-profit advocacy group or complete 30 hours of *pro bono* service as part of NU's cooperative education program.
  - World Class Housing Collaborative – the Center for Urban and Regional Policy provides assistance to neighborhood based community organizations such as Dorchester Bay Economic Development Corporation, Open Space Action Team among others to produce affordable housing.
  - Community Flower Drive in Spring – donates flowers for community beautification.
  - Facilities Access - provides free meeting space to various community groups.
  - Northeastern Service Day students participate in various community service projects in East and West Fenway.
  - Annual holiday toy drive to benefit neighborhood daycare and child care facilities.
  - Connections – a program aimed at helping girls and women prepare for and pursue careers in engineering.
  - Community Tax Aid a collaborative project between NU's School of Business Administration and the IRS to provide free tax aid to low income taxpayers in communities surrounding Northeastern.
  - Martin Luther King Jr. Community Service Day aimed at assisting surrounding communities with volunteer service from NU's faculty, students and staff.
-

### **School of the Museum of Fine Arts, Boston**

- Artist's Resource Center creates partnerships with educational institutions, museums, social service programs, art studios, galleries, health care facilities and commercial businesses to provide career enrichment for students and alumni while serving the community.
  - Young Artist's Program (tuition bearing) for children 13-15 years runs and High School Summer Studio (tuition bearing) for high school juniors and seniors.
  - Galleries are free and open to the public.
- 

### **Simmons College**

- Frosty's Friends Winter Holidays treat provides gifts for children at local daycare center.
  - Jumpstart program that pairs preschool children with college students to prepare them for academic success. Program involved Jamaica Plain Head Start & Ellis Memorial Early Childhood center in the South End.
  - Facilities Access – free meeting space for various community groups.
  - Facilities Access for conferences, lectures and discussions as part of the Simmons Institute for Leadership and Change. Sponsored partners and programs include the Massachusetts Women's Political Caucus annual convention; LUNAFEST: films by for and about women; Center for New Words Book Readings; New England Women in Photography workshops and conferences; Patriots Trail Girl Scout Leadership Conferences; Audre Lorde Breast Cancer Awareness Brunch; Boston International Women's Day Celebration and Girls Get Connected Technology Conference.
  - Simmons provides space and resources to support grassroots initiatives, community building, and positive change in Boston area neighborhoods.
  - Simmons students work with Habitat for Humanity and Raise Your Voice campaign to promote civic engagement in Boston.
- 

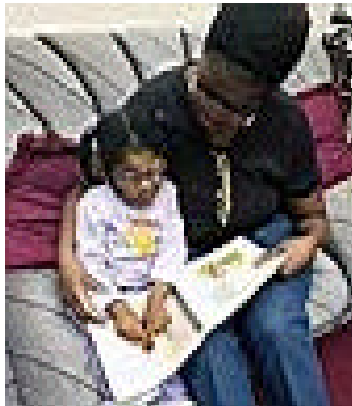
### **Wheelock College & Wheelock Family Theatre**

- Wheelock Family Theatre provides consultation to various arts and cultural organizations on disabilities access.
  - Possible to view free show during rehearsals.
  - Programs are American Sign Language interpreted for deaf patrons.
  - Programs are audio described for blind patrons.
  - Audio enhancement devices are available for every performance.
  - All shows feature open captioning.
  - The theatre is wheelchair accessible.
  - Braille and large format programs are available for every Wheelock Family theater production.
- 

### **Wentworth Institute of Technology**

- Technology Collaborative with Mission Hill and Fenway communities delivers multiple technology-driven programs and provides new opportunities for Mission Hill and Fenway low-income residents to develop technology skills, expand knowledge and capacity, and promote community through technology. A partnership with Wentworth Institute, MissionWorks, Alice H. Taylor Tenants Task Force, Fenway CDC, Parker Hill/Fenway ABCD Neighborhood Service Center, and the Office of City Councilor Mike Ross.
  - Community Benefit Tuition Waiver & Scholarship Programs – Mission Hill and Fenway residents can take free courses at Wentworth in the day, evening and non-credit program; must be referred by community leader or NBO and meet admission requirements.
  - Mission Hill/Fenway Technology Goes Home Program an intergenerational program for families where parents or grandparents and their children (an adult and at least one child in grades 4 to 12), learn computer skills together. Wentworth hosts the City wide graduation exercise each year.
  - Community Policing: 1-2-3 Program and Mission Hill Crime Committee participation.
-

- Community Service Day all entering freshman participate in one day of service to the community, addressing the needs of neighborhood non-profits ranging from moving classroom furniture, painting hallways, weeding gardens, to conducting neighborhood surveys.
  - Community Lab – free facilities access for various training programs *eg.* Mission Works, Sociedad Latina, Technology Goes Home and many more neighborhood based programs.
  - Computer Science Service Learning a program in which students studying computer science assist community agencies to create database solutions that address the particular needs of each agency and improve services for clients.
  - VITA program – students and staff provide free income tax preparation and filing for neighborhood residents (collaboration with IRS). Program is particularly focused on assisting individuals with low and limited income, individuals with disabilities, non-English speakers and elderly taxpayers.
  - Let's Maintain is a collaboration of community-based organizations, property management companies, public housing, high schools and Wentworth. The program provides classroom and work-site instruction, case management, internships, assisted job search and placement, and post-placement support for 36 to 40 low income young adult males ages 18-24, residents of the City of Boston, with significant barriers to entry-level, benefited employment
  - Students and staff assist non-profit organizations with their technology needs as part of student service learning program.
  - Provides landscaping and buffering improvements for Alice Taylor apartments and Parker street parking lot.
  - Student assistance to neighborhood non-profits through co-op experiential learning, work-study programs and volunteer activities. Over 42 students each year earn their Federal Work Study Stipends working in neighborhood-based organizations (NBOs) at no charge to NBOs.
  - Maintains Evans Way Park as a service to community.
  - Direct monetary contribution to community service organizations.
  - Indirect contributions to community – facilities and training access to Wentworth.
- 



National Braille Press, Hands

### **YMCA of Greater Boston**

- Provides health and wellness facilities to the public at low cost. WeCan program is a national program that targets youth and their parents in preventing overweight and obesity.
  - Provides homeless/transitional housing at Central Branch for long term residents, this includes the Families in Transition (FIT) program, the Cardinal Medeiros program and Huntington House affordable housing.
-

- Ongoing partnership with Federal Dorchester program to house persons undergoing drug and alcohol recovery.
  - Partnership with Dept of Transitional Housing to provide 22 units for homeless families.
  - Boston Connects – a community-university partnership between Boston College, Boston Public Schools and the Y. Boston Connects places coordinators in each of the 10 partnering Boston public schools. The coordinators identify barriers to learning and engage community partners in order to provide resources to address the barriers. Boston Connects coordinates services and programs in areas such as after school child care, health and dental care, mental health counseling, mentoring, tutoring and family enrichment.
- 



New Notes in the Mary Baker Eddy Library's Hall of Ideas

# COMMUNITY PARTNERSHIP Programs

*“I don’t believe in the separate but equal philosophy because it does not give people access to the full range of possibilities that are available to them. It creates separate experiences for the disabled and tells them that their disabilities make them less than. I am a proponent of implementing good policies and procedures that work for everyone understanding that there is no one normal way of doing things.”*

-Todd Herriott, ADA Compliance Officer/Coordinator Disability Services, Simmons College

## IN THIS SECTION:

Access Checklist by Institution